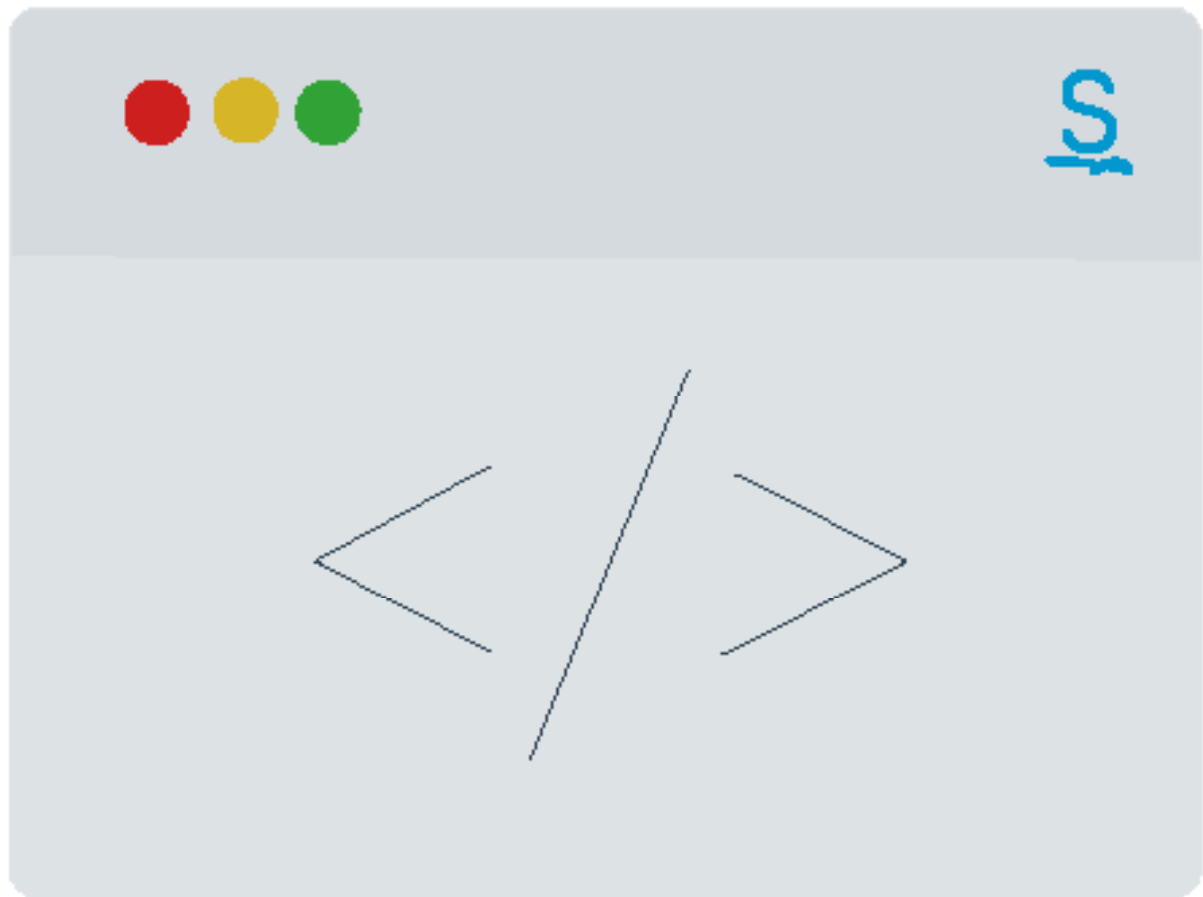


# The Signable API: How to use guide



Signable

# 1

## What is the Signable API?

Using our API you can integrate Signable with your existing internal system for streamlined electronic signing.

The Signable API is quick to integrate, flexible and scalable meaning companies of all different sizes can use it. The test mode acts like a Sandbox where you can experiment with sending documents without sending out anything publicly.

The Signable API is straightforward to use, but a powerful tool built for developers and trusted by businesses. Currently, hundreds of customers use our API to innovate their business processes faster, allowing them to create better products while standing out from the competition.

Signable's API is REST based, meaning it is simple and easy to use.

*"Not only has this helped us maintain a great relationship with our clients, it has provided us with new business opportunities."*

Civica - Signable Partner

At Signable, we cater for hundreds of businesses who use our API to send thousands of envelopes a year. Some of our clients include:



# 2

## How to get started

Getting started with using our API is easy. You supply your unique API ID and key and request an action to be performed (e.g. a list of all unsigned contracts or updating a client of yours), we then pass you back to data for you to display however you wish.

1 Go to your Company Settings page



2 Click the View API & webhooks button on the right hand side

3 Click the Add API Key button on the right hand side

4 In the API key name/description box, please enter a name that will allow you to quickly understand what this key is for (i.e. the name of the software that you are trying to link

5 In the 'API key type' dropdown, please select 'Live'. You will need an active trial or subscription to have a 'Live' key. Please contact us if you think you have one.

6 Click the 'Add key' button at the bottom

# 3

## API Benefits For Businesses



### A fraction of the cost of internally building tools

The total cost of ownership (TCO) of internally developed tools can often be up to five times greater than initially expected, a statistic revealed following conversations with a leading freight forwarder. For data extraction in logistics, with constantly changing document layouts, new issuers, new document types, and even new document layouts come the ongoing costs of upgrades and maintenance.



### Our API is available on ALL plans

You don't need to be on large & exclusive business plans to use our API - unlike some of our competitors. You will gain access to our API on all monthly & annual plans.



### Flexible & scalable

The Signable API acts as the connecting layer that allows for a more coherent interaction of the two modes, leading to the deployment of innovative and feature-rich applications. Send documents at lightning speed, also saving you time when managing documents.



### Increase business productivity

With the Signable API, you can leverage powerful state-of-the-art document technology. This can greatly save development time and enhance your enterprise's productivity, enabling you to realize business goals faster.

# 4

## FAQ's



"With our Signable integration, everything is kept in sync, and all of our customers are kept in the loop. Our documents signed legally, quickly & securely online with electronic signatures."

Prosolution - Signable Partner

### What are your API costs?

API access is available on all of our monthly plans at no additional cost. So the overall cost of using the API is just dependant on which plan you opt for. You can also use the API in full on our 14 day free trial.

### What is API access/what can I do with the API?

API access allows you to use Signable's esignature API. This allows you to develop your own integrations between Signable and the other systems you might use. You can find some more information here on what can be done with the Signable API: <https://developer.signable.co.uk/>

### Where can I find a template fingerprint?

When logged into Signable via the website, you can find your template fingerprint by clicking into your Templates section and then clicking on the particular template. The fingerprint will then appear in the page URL. It's a string 32 letters/numbers and will appear before /templates/, for example in the URL <https://signable.app/#/templates/79428e29ec14bf34e7fba77a4976e69a>

The template fingerprint is 79428e29ec14bf34e7fba77a4976e69a which you can then use to perform API requests.

### Do you offer embedded signing?

You will see in the example response here: <https://developer.signable.co.uk/v1/envelope/> that the API returns an iframe under "envelope\_signing\_embed". This allows the signing page to be directly embedded onto your website, without the need for the signer receiving any emails requesting them to sign.

The embedded signing option is one which our technical team can enable on a per account basis. We need to ensure we still comply legally, so the signing page does need to be behind a secure page which the signer has sole access to (for example they sign into your website with a username/password).

## 5

# Pricing & Plans

We pride ourselves on being one of the most affordable API eSignature solutions in the UK, while maintaining the highest level of quality.

	Price
<b>Small Business Monthly</b>	\$30
<b>Medium Business Monthly</b>	\$65
<b>Large Business Monthly</b>	\$155
<b>Corporate Monthly</b>	\$265

## But, there are cheaper options through our annual plans!

Our annual plans include a discount of 2 months free, making this the most popular option among businesses who wish to use our API. Find our [annual pricing here](#).

	Annual Price Per Month	Savings Per Month
Small Business Annual	\$25	\$5
Medium Business Annual	\$54.16	\$10.84
Large Business Annual	\$129.16	\$25.84

## Resources:



[API Webinar](#)



[API Developer site](#)



[API partner case study: TouchRight](#)